

COMMUNITY TRAVEL GUIDE



Your guide to travelling to, from and around
Wolsey Park



WOLSEY PARK

RAYLEIGH • ESSEX



INTRODUCTION

WELCOME TO YOUR HANDY TRAVEL GUIDE which we hope will make it easy for you to get out and about and make the most of the exciting new parkland community of Wolsey Park. This Guide is packed with handy information including timetables for trains and buses, charging points for electric vehicles, routes for cycling and walking and more. It gives you the chance to reduce your carbon footprint, get fitter and save money at the same time!

So, whether you are enjoying Wolsey Park's 50 acres of open green space just a few steps from your front door, visiting Rayleigh for its vibrant town centre, exploring the Essex coastline, or commuting further afield, you're in the perfect spot to take advantage of sustainable travel.

Here's a short summary of the information you'll find in this Community Travel Guide:

TRAVELLING *by* CYCLE

TRAVELLING *on* FOOT

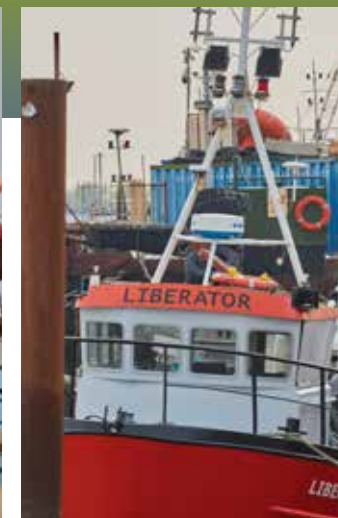
TRAVELLING *by* BUS

TRAVELLING *by* RAIL

ELECTRIC CARS, PARKING, TAXIS *and* CAR SHARING

ONLINE SHOPPING

COMMUNITY *and* SCHOOL TRANSPORT



TRAVELLING *by* CYCLE

CYCLE TRAINING

Essex County Council are encouraging residents to use bikes for transport in and around Essex. If one of the main barriers for not cycling is lack of confidence, cycle training could help. ECC have a network of over 40 instructors that can help overcome that barrier, from learning to ride through to planning your journey for work or pleasure. From children to adults, all ages and abilities can be catered for.

Email saferessexroads@essexhighways.org for more information or visit our Safer Essex Roads Partnership Cycling pages



BIKEABILITY

Bikeability was launched in England in 2007 and is the government approved and nationally recognised award for cycle training overseen by the Department for Transport. It is underpinned by the National Standards which were developed by leading experts in the fields of both cycling and road safety and launched in 2005. It is both a quality control procedure for training schemes and the consumer facing brand for delivery of the standards.

Bikeability is 'cycling proficiency' for the 21st century, designed to give the skills and confidence needed to cycle safely on today's roads.

Visit the ECC Safer Essex Roads Partnership Cycling pages more information on Bikeability and to see the full list of courses available.



CYCLING UK

Cycling UK has championed the cause of cycling for well over a century. They promote all forms of cycling, protect the interests of existing and would-be cyclists, and inspire people of all ages, backgrounds and abilities to discover the joys of cycling. To contact a qualified cycle instructor in your area, a list of local trainers can be found on the Cycling UK website.

For more information visit www.essexhighways.org

Cycle training is available for adults and children, via Safer Essex and managed by Bikeability.

For more information visit www.saferessexroads.org or email saferessexroads@essexhighways.org

There are a number of local cycle shops to assist you with getting around by bike. The nearest to Wolsey Park are:

Grips Ltd

58 Eastwood Road, Rayleigh, SS6 7JP
Mon–Fri: 9:00am–6:00pm
Sat: 9:00am–5:00pm
Tel: 01268 776661
www.gripsbikes.co.uk

Halfords – Rayleigh

543-547, Rayleigh Road,
Rayleigh SS7 3TN
Mon–Fri: 8:00am–8:00pm
Sat: 8:00am–6:00pm
Sun: 10:00am–5:00pm
Tel: 01268 772214
www.halfords.com

Useful contacts, clubs and organisations:

Essex Highways
www.essexhighways.org

Bikeability
www.bikeability.org.uk

Cycling UK
www.cyclinguk.org

Sustrans
www.sustrans.org.uk

Strava
www.strava.com or download the app for Android and iPhone.

TRAVELLING *on* FOOT

There are a number of facilities available within walking distance of Wolsey Park, including Nursery, Primary and Secondary Schools, a Supermarket, General Stores, and a Leisure Centre Facility.

The image below shows your existing facilities and the local schools.

In addition to your local walking routes, Rayleigh and Rochford are beautiful places to live, work or visit. The best way to explore and experience its many sights and attractions is on foot.



Walking is simple, free and one of the easiest ways to get active and become healthier. Walking 10,000 steps a day can improve your health, build stamina and burn excess calories. Why not try the '10,000 steps a day' challenge. Download the 'Map My Walk' or Pedometer Apps on iPhone and Android.

The following websites provide further information on walking:

Visit Essex County Council
www.essex.gov.uk

National Trust
www.nationaltrust.org.uk

Visit Rochford District Council
www.rochford.gov.uk

Living Streets
www.livingstreets.org.uk

British Heart Foundation
www.bhf.org.uk

Sustrans
www.sustrans.org.uk

Walking for Health
www.walkingforhealth.org.uk

TRAVELLING *by* BUS

Your nearest bus stops are located on London Road – serving the number 25 bus route and Rawreth Lane serving the number 3 bus route.

The plan and table shows the scheduled bus routes from London Road and Rawreth Lane bus stops.

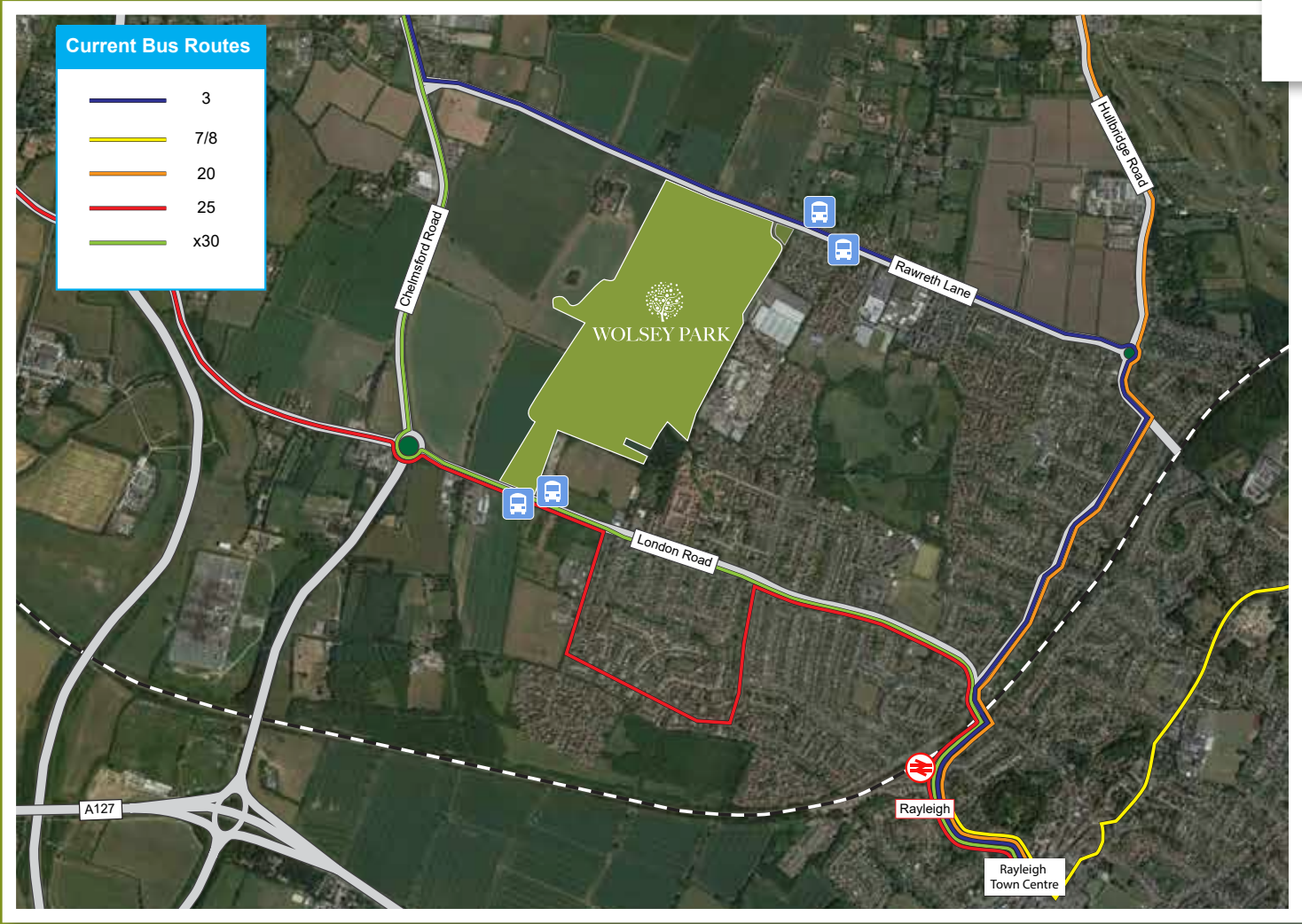
A new bus service will be introduced at Wolsey Park in due course. We will provide further details prior to the launch of the service.

Bus Service	Bus Route	Peak Frequencies AM	First and Last Bus from the nearest bus stop (Mon-Fri)
3	Chelmsford – Southend-on-Sea	07:54	First: 07:54 Last: 16:36
	Southend-on-Sea – Chelmsford	07:33	First: 07:33 Last: 18:38
25	Basildon – Southend-on-Sea	07:01, 07:18, 07:32, 07:49, 08:04, 08:21, 08:36, 08:49	First: 05:47 Last: 20:03
	Southend-on-Sea – Basildon	07:15, 07:31, 07:47, 08:06, 08:26, 08:40, 08:53	First: 06:15 Last: 21:01

Information correct as of September 2020

Tickets for the 25 bus services can be purchased from the First Bus App for Android and iPhone. For information on the number 3 bus service, call 01621 874411.

For routes and timetables visit www.traveline.info or download the free Bus Checker App for Android and iPhone.



TRAVELLING *by* RAIL

The nearest station to Wolsey Park is Rayleigh Station which is approximately 2km from the London Road access. Rayleigh station provides rail services to London Liverpool Street westbound and Southend Victoria eastbound. Interchanges from Shenfield provides northbound services to various destinations including Chelmsford, Colchester, Ipswich and Norwich.

The station can be reached via the 3 bus service to the north of the development or the 25 bus service to the south of the development. Safe and secure cycle parking is also available at the station.

PlusBus ticketing is available for this location. A Rayleigh PlusBus ticket gives you unlimited bus travel on participating operators' services, around the whole urban area of Rayleigh town.

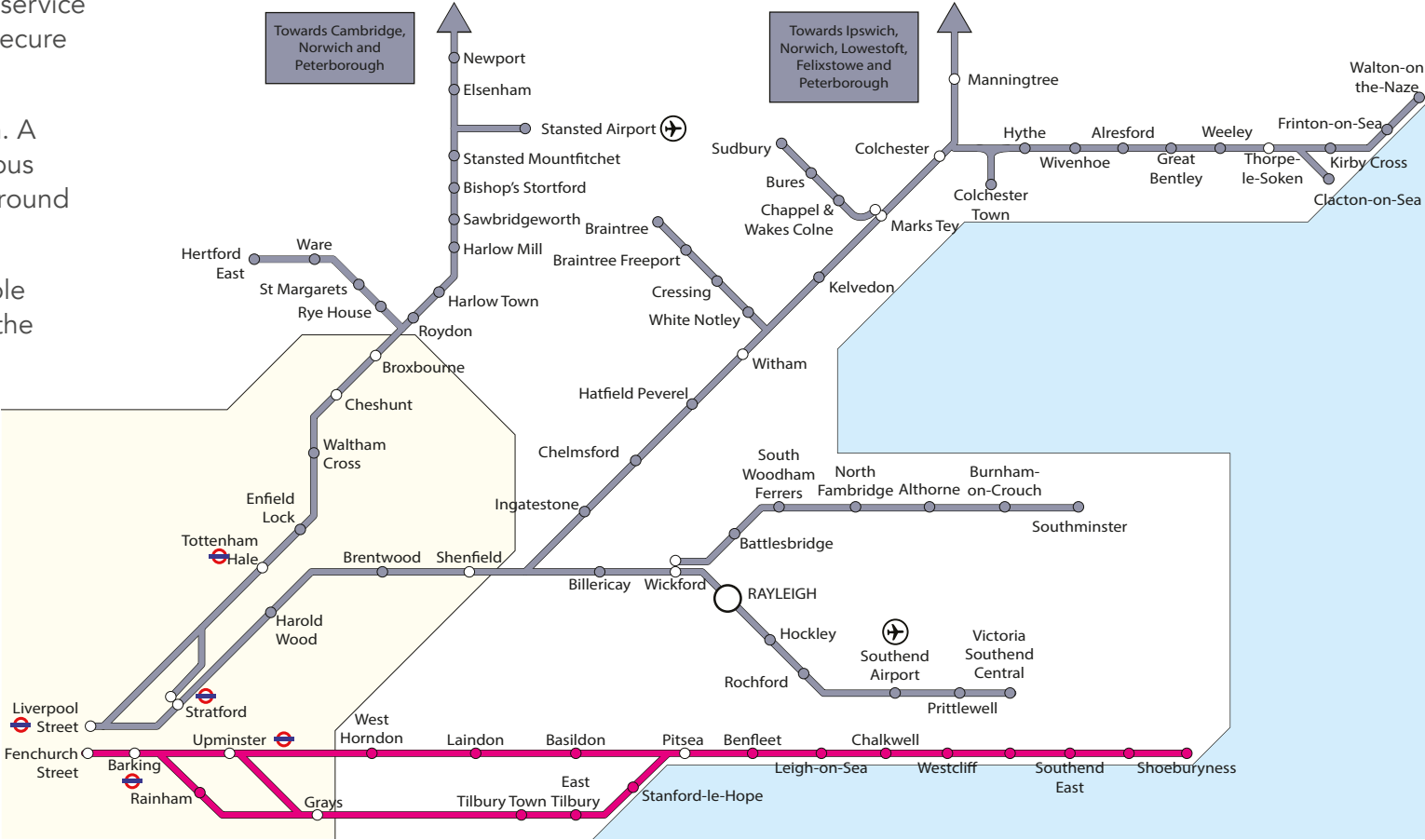
The plan illustrates the destinations accessible from Rayleigh, with the timetables showing the frequencies.

For more information about rail services and up to date timetables and station facilities, please visit the National Rail Website www.nationalrail.co.uk or download the National Rail App for Android and iPhone.

For live travel updates, ticket purchases, timetables and more you can also visit the Greater Anglia website at www.greateranglia.co.uk.

Rayleigh to London Liverpool Street						
	First Train of the Day	Arrival at Final Destination	AM Peak Frequencies	Daytime Frequencies	Last Train of the Day	Arrival at Final Destination
Mon – Fri	04:16	05:06	07:06, 07:19, 07:29, 07:39, 07:48, 07:58, 08:08, 08:19, 08:28	06, 26, 46	23:16	00:01
Sat	04:16	05:06	-	06, 26, 46	23:16	23:58
Sun	06:30	07:27	-	10, 40	23:10	23:57

London Liverpool Street to Rayleigh						
	First Train of the Day	Arrival at Final Destination	PM Peak Frequencies	Daytime Frequencies	Last Train of the Day	Arrival at Final Destination
Mon – Fri	05:35	06:20	17:04, 17:15, 17:25, 17:34, 17:45, 17:54, 18:05, 18:17, 18:25, 18:37, 18:45, 18:52	13, 35, 55	00:50	01:36
Sat	05:36	06:20	-	13, 35, 55	00:50	01:36
Sun	07:14	08:03	-	20, 50	00:44	01:36



ELECTRIC CARS, PARKING *and* TAXIS

If you are thinking of buying a low emission vehicle you could be eligible for a plug-in grant. For more information visit www.gov.uk/plug-in-car-van-grants

Public electric car charging points are available in and around Rayleigh, the map below shows the nearest charging points to Wolsey Park.

For more electric vehicle information and access to nationwide charging point maps please visit www.zap-map.com.

HIGHWAY CODE

Please visit www.gov.uk/browse/driving/highway-code-roadsafety to keep up to date with the current highway code.



PARKING & TAXIS

For up to date parking in Rayleigh and Rochford including parking maps and price guides, please visit <https://www.parkopedia.com/> and www.rochford.gov.uk/parking-and-travel/car-parks

For information on taxi and private hire services in Rayleigh visit <https://www.rochford.gov.uk/parking-and-travel/taxis-and-private-hire-vehicles>



ELECTRIC CARS

CAR SHARING

If you regularly commute to your workplace by car you could save up to £50 a month by sharing your journey with a colleague. Car sharing (also called lift sharing, ridesharing and carpooling) is simply an agreement between two or more individuals to travel together by car, reducing fuel costs without giving up the convenience and comfort of a car.

Car sharing can be used for any type of journey, both business and leisure. Feedback from regular car sharers tells us that they feel safer, enjoy the chance to have a chat and even make new friends.

What is car-sharing?

Car sharing is when there is more than one occupant in a private car. We all share cars regularly, with our friends and family, without even thinking. But there are often times when a driver has empty seats just because they don't know anyone who needs a lift or they mightn't be aware of the benefits of sharing.

Liftshare enables organised car sharing by connecting people travelling in the same direction so they can arrange to travel together and share the costs, whilst reducing congestion and pollution at the same time.

What is Essex Car Share?

Essex Car Share provides a journey matching service for all those who live, work and travel in and around your area. It is absolutely free to use and has been designed for every possible user such as commuters, students, football supporters or employees. Simply register at www.essexcarshare.com and share your fuel costs!

When can I share a car?

You do not have to own a car or even have a driving license to join the scheme

and find a lift, you can share a car for any journey: getting to work, doing the weekly shop, taking the children to school, going to the match at the weekend, travelling to a festival, event or show, getting to or from university, visiting friends or getting to the airport.

What are the benefits of car sharing?

There are numerous benefits to car-sharing, including: reduced stress of travelling as the driving can be shared between drivers; saving you money as the travel costs are shared; reducing the number of cars on the road, resulting in less congestion, pollution and parking problems; and it reduces the need to own a private car.



Register for free www.essexcarshare.com

CAR SHARING



SHOPPING ONLINE

Why not consider the local independent shops for sustainable shopping?

Alternatively, instead of making a journey to the shops by car, why not try online food shopping and have your shopping delivered to your door.

All the major supermarkets offer on-line shopping to your home.

www.asda.com

www.sainsburys.com

www.tesco.com

www.waitrose.com



COMMUNITY & SCHOOL TRANSPORT

WYVERN COMMUNITY TRANSPORT

Wyvern Community Transport is a 'not for profit' organisation providing a door to door transport service to the residents of Rochford District and Castle Point Borough.

The service enables people to take part in activities that they would otherwise struggle to travel to, and therefore reduces exclusion and isolation of vulnerable people. The fleet comprises of six minibuses and a Caddy, and they are all wheelchair accessible.

Wyvern Community Transport also have a community (social) car scheme, whereby volunteer drivers use their own cars to take members to hospital and medical appointments.

You can download a member's application form from this website www.wyvernct.org.uk, or you can request one by phoning one of the booking lines on 01268 753513 or 01268 754936.

How much does it cost?

You are required to register for membership each year but this is FREE.

You will pay £4.50 for a journey up to 3 miles. For journeys over 3 miles, in a minibus or caddy it is a further £0.80p per additional mile; and in a social car it is a further £0.45p per additional mile. Carers pay a flat fare of £2.00.



SCHOOL TRANSPORT

Essex County Council provides transport for children to attend their local school or a nearer school where that school is 2 miles or more from the home or 3 miles or more if the child is aged 8 years and above. The latter applies from the point at which the child starts Year 4 or primary education.

For School Transport Information, there are various options for travelling to school. For more information on your specific requirements, please email Essex County Council at educationawards@essex.gov.uk or visit www.essex.gov.uk/school-transport.

COMMUNITY TRAVEL GUIDE

Contact your Travel Co-ordinator



Rebecca Godden

Tel: 020 7874 1588

Email: rgodden@mayerbrown.co.uk

Acting on behalf of Countryside Properties

Try Google to plan your journey

google.co.uk/maps

For further information on travel and
useful information visit:

Essex County Councilwww.essex.gov.uk

Rochford District Council ..www.rochford.gov.uk

National Rail Enquirieswww.nationalrail.co.uk

Traveline.....www.traveline.info

Essex Lift Share:.....www.essexcarshare.com

First Buswww.firstgroup.com/essex

Or call

Essex County Council**08457 430 430**

Rochford District Council ..**01702 318034**

National Rail Enquiries**03457 48 49 50**

Traveline.....**0871 200 22 33**

Arriva.....**0344 800 44 11**



COUNTRYSIDE

Places People Love

